

Enzymology – Screening by micro-fluidic Capillary electrophoresis

Caliper EZ reader II: 12-capillary 384-well sampler

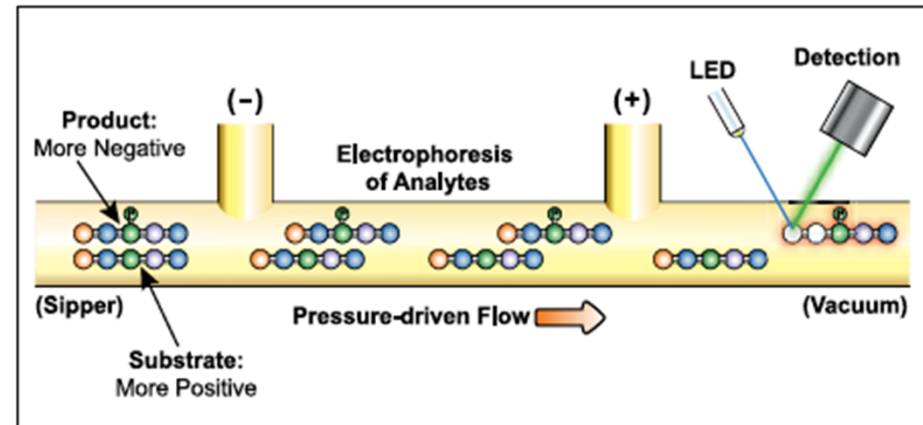
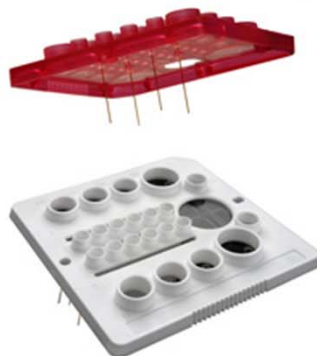


Figure 1. Shift in mobility of non-phosphorylated peptide substrate and phosphorylated product when separated in the chip by electrophoresis and detected via LED induced fluorescence used for HDAC assay development.

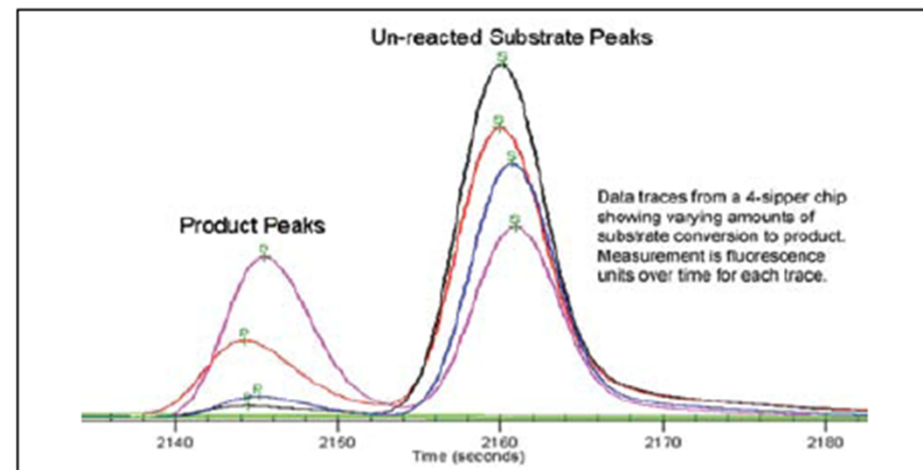


Figure 2. Height of the signal reveals the extent of the reaction.